

Injury attendances to Royal Oldham Hospital Emergency Department

January 2011 to December 2011

This report summarises recorded injury attendances to Royal Oldham Hospital Emergency Department (ED) between January 2011 and December 2011.

Between January 2011 and December 2011 there were 33,175 injury attendances to Royal Oldham Hospital ED. Males accounted for over half (55%) of all attendances. The month with the highest attendances was July (n=3,280) with February (n=2,273) having the lowest attendances for injury (**Figure 1**). The majority (62%) of attendances were recorded as other injury. Of the specified injury groups falls (21%) accounted for the highest proportion followed by road traffic collisions (RTC) (7%) and assault (5%) (**Table 1**).

For all injuries the highest proportions of attendances were for persons aged 5 to 19 (27%) and 20 to 34 years (23%) (**Figure 2**). Nearly two-fifths (39%) of fall attendees were aged 65 or over (**Figure 3**).

Table 2 shows the location of the incident of injury attendances. Over two-fifths (44%) of injuries occurred in the home. Almost three-quarters (74%) of deliberate self-harm (DSH) injuries and a half (50%) of falls occurred in the home.

Table 3 shows the ethnicity of injury attendees to Royal Oldham Hospital ED. Over three-quarters (76%) were white, 9% were Pakistani and 5% were Bangladeshi.

The disposal of a patient can give an indication of the severity of the injuries sustained. Over six in ten (61%) of attendees were discharged, over a quarter (26%) had a referral/follow-up and 11% were admitted (**Table 4**). Almost four in five (78%) of RTC attendees were discharged. Almost six in ten (59%) of burns and scalds attendees had a referral/follow-up (**Table 5**).

Table 6 shows the arrival methods of injury attendances at Royal Oldham Hospital ED. Nearly seven in ten (67%) arrived by private transport while a fifth (20%) arrived by ambulance.

Table 7 presents data for assault attendances to Royal Oldham ED. Nearly three-quarters (73%) were male and over two-fifths (45%) occurred in a public place. Nearly a half (47%) of attendees were aged 20 to 34.

Figure 1: Royal Oldham Hospital ED: Total injury attendances by gender and month, January 2011 to December 2011

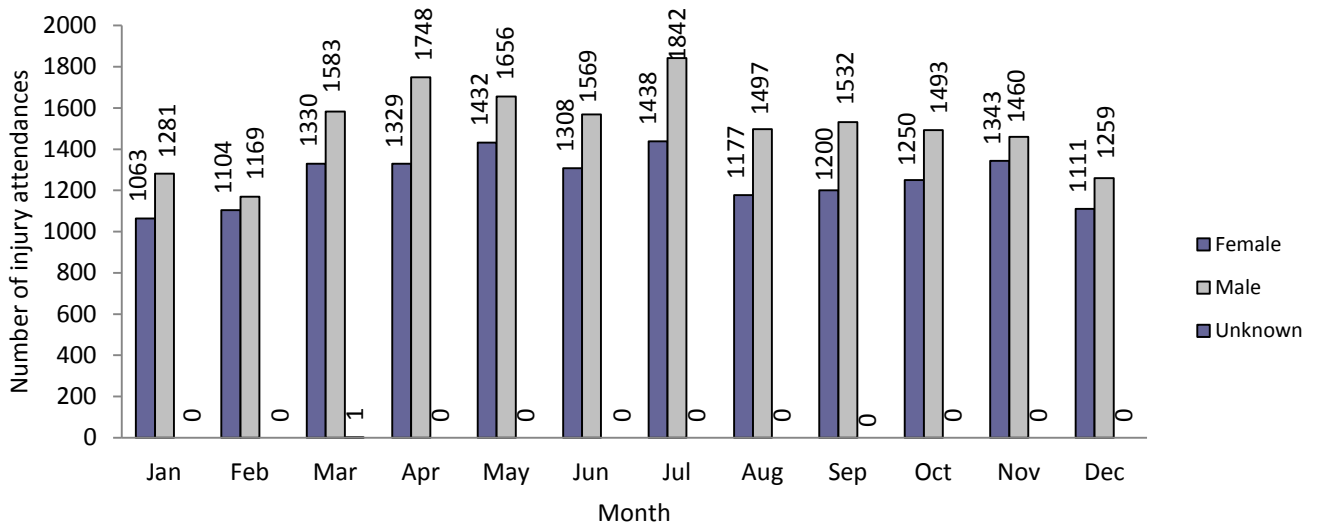
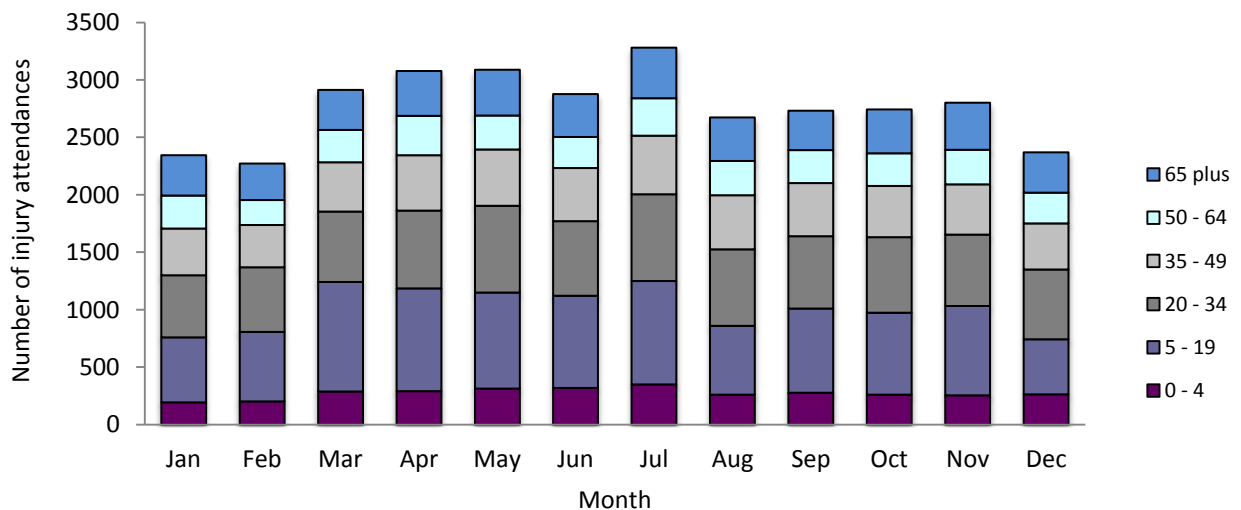


Table 1: Royal Oldham Hospital ED: Total injury attendances by injury group and month, January 2011 to December 2011¹

Injury group	Jan	Feb	Mar	Apr	May	Jun	Jul	Aug	Sep	Oct	Nov	Dec	Total	%
Other injury	1445	1475	1923	2043	1962	1780	2055	1581	1605	1629	1767	1220	20511	62
Fall	480	448	564	544	622	648	700	612	620	633	566	654	7091	21
RTC	182	133	177	174	221	215	196	172	218	217	194	218	2317	7
Assault	111	106	107	144	137	94	143	137	123	122	142	157	1523	5
Burns and scalds	59	37	48	68	54	60	75	56	64	58	64	54	697	2
Bites and stings	31	31	45	55	50	56	63	69	71	48	36	37	592	2
DSH	36	38	44	45	40	24	44	42	31	36	34	30	444	1
Total	2344	2273	2914	3077	3088	2877	3280	2674	2732	2743	2803	2370	33175	100

*Percentages may not add to 100 due to rounding.

Figure 2: Royal Oldham Hospital ED: Total injury attendances by age group and month, January 2011 to December 2011



¹ Due to low numbers drowning/immersion (n<5), firework (n<5), sports injury (n<5) and electrical accident (n=47) were included in other injury.

Figure 3: Royal Oldham Hospital ED: Total injury attendances by age group and injury group (excluding other injury), January 2011 to December 2011

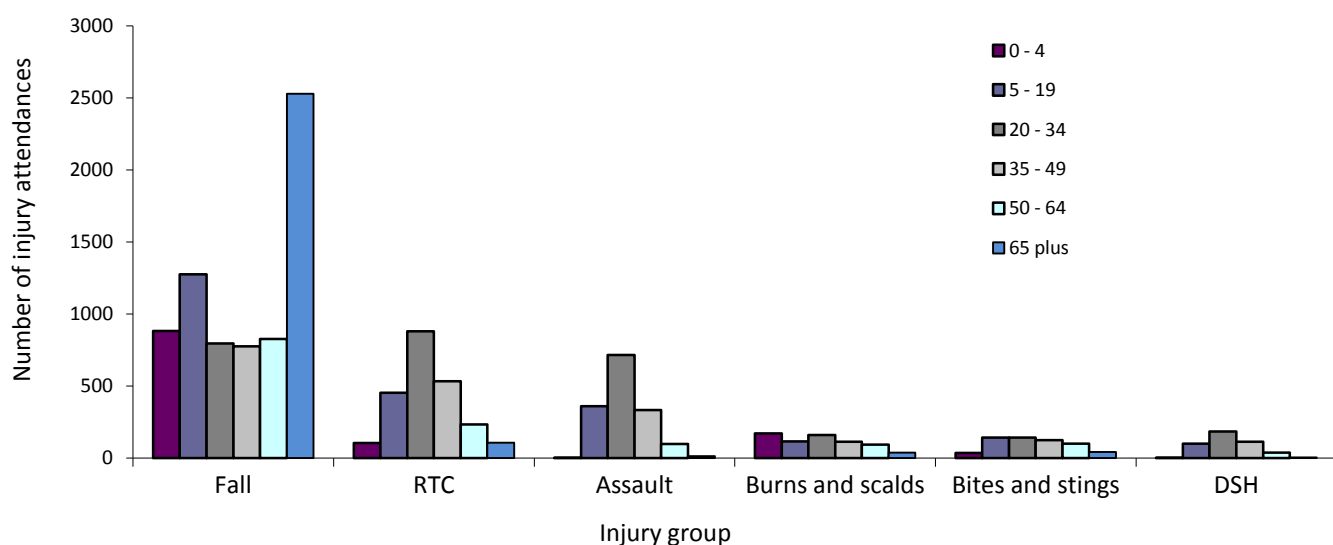


Table 2: Royal Oldham Hospital ED: Total injury attendances by incident location and injury group, January 2011 to December 2011^{2*}

Location	Assault		Bites and stings		Burns and scalds		DSH		Fall		Other injury		RTC		Total	
	n	%	n	%	n	%	n	%	n	%	n	%	n	%	n	%
Educational establishment	30	2	***	0	5	1	***	1	286	4	1506	7	***	0	1833	6
Home	368	24	259	44	347	50	330	74	3553	50	9504	46	72	3	14433	44
Not recorded	17	1	47	8	186	27	10	2	713	10	531	3	41	2	1545	5
Other	394	26	109	18	48	7	64	14	740	10	4114	20	2142	92	7611	23
Public place	678	45	141	24	20	3	37	8	1619	23	3181	16	50	2	5726	17
Work	36	2	***	6	91	13	***	0	180	3	1675	8	***	0	2027	6
Total	1523	100	592	100	697	100	444	100	7091	100	20511	100	2317	100	33175	100

*Percentages may not add to 100 due to rounding.

Table 3: Royal Oldham Hospital ED: Total injury attendances by ethnicity and month, January 2011 to December 2011³

Ethnicity	Jan	Feb	Mar	Apr	May	Jun	Jul	Aug	Sep	Oct	Nov	Dec	Total	%
White	1803	1725	2144	2317	2348	2102	2473	2068	2075	2089	2156	1771	25071	76
Pakistani	194	192	250	270	253	320	304	214	220	233	257	232	2939	9
Not stated	167	171	287	247	239	211	253	202	175	194	183	159	2488	7
Bangladeshi	110	113	151	155	150	160	158	110	166	145	125	131	1674	5
Mixed	13	20	23	31	34	23	30	18	23	17	14	17	263	1
Any other ethnic group	14	19	20	17	29	19	27	16	21	21	22	19	244	1
Black	22	10	14	19	9	17	16	26	26	16	26	16	217	1
Any other Asian background	6	8	13	7	12	10	8	11	13	11	7	13	119	0
Indian	7	10	7	10	10	11	9	5	12	12	6	5	104	0
Chinese	***	***	***	***	***	***	***	***	***	***	***	***	37	0
Not recorded	***	***	***	***	***	***	***	***	***	***	***	***	19	0
Total	2344	2273	2914	3077	3088	2877	3280	2674	2732	2743	2803	2370	33175	100

² Please note that all numbers less than five have been suppressed in line with patient confidentiality and if there is only one number <5 in a category then two numbers will be suppressed at the next level.

³ White = Irish, British, other white background; Mixed = white and black, white and Asian, mixed any other; Other = any other ethnic group, Any other Asian background; Black = African, Caribbean, other black.

Table 4: Royal Oldham Hospital ED: Total injury attendances by method of disposal and month, January 2011 to December 2011⁴

Disposal	Jan	Feb	Mar	Apr	May	Jun	Jul	Aug	Sep	Oct	Nov	Dec	Total	%
Discharged	1440	1401	1777	1914	1854	1777	2007	1527	1735	1754	1691	1441	20318	61
Referral/follow-up	582	587	828	810	834	747	884	741	640	636	746	551	8586	26
Admitted	276	244	261	302	347	301	330	331	312	318	333	323	3678	11
Other	46	41	48	51	53	52	59	75	45	35	33	55	593	2
Total	2344	2273	2914	3077	3088	2877	3280	2674	2732	2743	2803	2370	33175	100

Table 5: Royal Oldham Hospital ED: Total injury attendances by method of disposal and injury group, January 2011 to December 2011

Disposal	Assault		Bites and stings		Burns and scalds		DSH		Fall		Other injury		RTC		Total	
	n	%	n	%	n	%	n	%	n	%	n	%	n	%	n	%
Admitted	329	22	***	5	***	6	96	22	1799	25	1241	6	143	6	3678	11
Discharged	722	47	378	64	226	32	211	48	3491	49	13475	66	1815	78	20318	61
Other	187	12	***	1	***	3	73	16	173	2	74	0	63	3	593	2
Referral/follow-up	285	19	183	31	409	59	64	14	1628	23	5721	28	296	13	8586	26
Total	1523	100	592	100	697	100	444	100	7091	100	20511	100	2317	100	33175	100

*Percentages may not add to 100 due to rounding.

Table 6: Royal Oldham Hospital ED: Total injury attendances by mode of arrival and month, January 2011 to December 2011

Arrival mode	Jan	Feb	Mar	Apr	May	Jun	Jul	Aug	Sep	Oct	Nov	Dec	Total	%
Private transport	1560	1568	2079	2061	2102	1939	2200	1783	1813	1856	1861	1460	22282	67
Ambulance	506	486	540	607	527	516	625	562	522	531	572	557	6551	20
Taxi	108	74	127	131	137	132	141	93	130	104	122	133	1432	4
Not recorded	62	41	41	130	198	133	155	108	122	133	127	109	1359	4
Foot	40	26	55	51	48	49	66	39	61	41	52	48	576	2
Public transport	22	37	38	51	31	51	45	31	44	29	36	19	434	1
Work transport	18	12	18	16	11	30	20	19	22	24	11	19	220	1
Police	18	23	12	23	20	14	11	16	7	13	15	14	186	1
Other	***	6	***	***	6	8	9	9	***	5	***	***	73	0
Unknown	***	0	***	***	8	5	8	14	***	7	***	***	62	0
Total	2344	2273	2914	3077	3088	2877	3280	2674	2732	2743	2803	2370	33175	100

*Percentages may not add to 100 due to rounding.

⁴ Admitted=admitted to ED bed/became a lodged patient of the same health care provider; Discharged=discharged - did not require any follow up treatment; Referral/follow-up =discharged - follow up treatment to be provided by GP, referred to ED clinic, referred to fracture clinic, referred to other out-patient clinic, transferred to other health care provider, referred to other health care professional; Other=died in department, left department before being treated, left department having refused treatment, other.

Table 7: Royal Oldham Hospital ED: Total injury and assault attendances by gender, incident location, age group and day/time of attendance, January 2011 to December 2011*

	Assaults (n=1,523)	All injuries (n=33,175)
Sex	%	%
Female	27	45
Male	73	55
Location		
Public place	45	17
Home	24	44
Other	26	23
Work	2	6
Educational establishment	2	6
Not recorded	1	5
Age group		
0 - 4	0	10
5 - 19	24	27
20 - 34	47	23
35 - 49	22	16
50 - 64	6	10
65 plus	1	14

*Percentages may not add to 100 due to rounding.

Author: Ian Warren, published February 2012

For further information please contact: Centre for Public Health, Liverpool John Moores University, 2nd Floor, Henry Cotton Building,
15-21 Webster Street, Liverpool, L3 2ET, Tel: 0151 231 4513 or Email: i.j.warren@ljmu.ac.uk Website: www.tiig.info